

Primary PE and School Sport Premium Conference

30th March 2017

#BCPPSPconference17



YOUTH
SPORT
TRUST



Chair of Active Black Country Deborah Williams



Active Black Country

Today's inactive children are tomorrow's inactive adults

Children

Black Country
Reception (Age 4 - 5)



11.9% OBESE (9.3% Nationally)

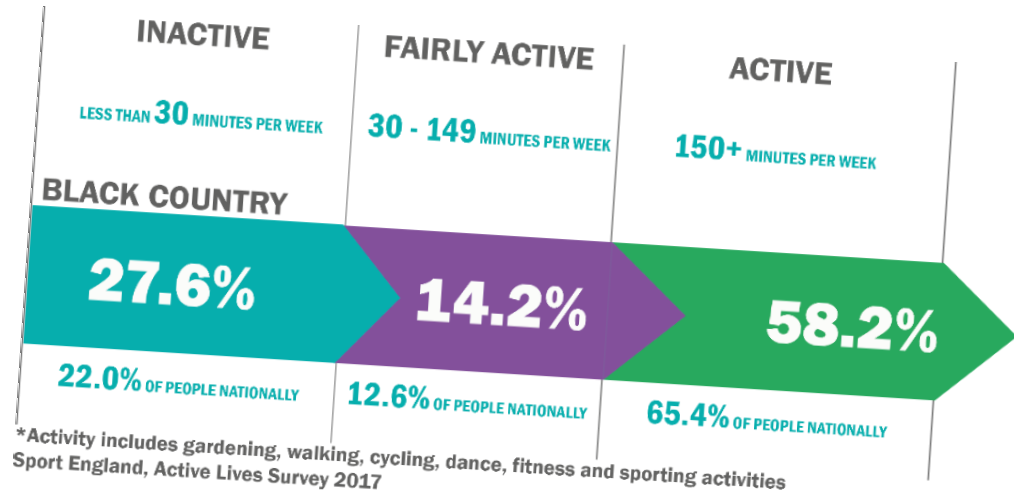
Year 6 (Age 10 - 11)



25.3% OBESE (19.8% Nationally)

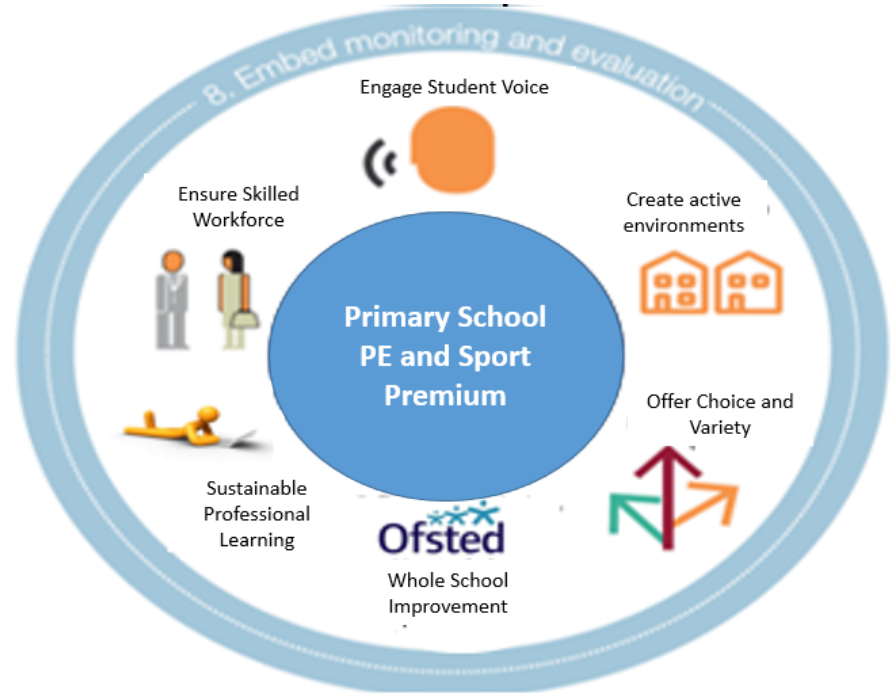
Source: National Child Measurement Programme, PHE 2015

Adults



Sustainable Legacy 2020: The Primary PE and School Sport Premium Picture

Sustainability
Additionality



Active Black Country Support



**All slides from today and further
information can be found at**

www.activeblackcountry.co.uk