

Primary PE and School Sport Premium Conference

30th March 2017

#BCPPSPconference17



YOUTH
SPORT
TRUST



Jacqui Oatley MBE

Primary PE and Sport Premium

1. Sustainable legacy
2. The use of funding
3. The role of Active Black Country



Marketplace Challenge

Ensure you get your card stamped at every marketplace stand to be entered into a prize draw.

Draw will take place Friday 31st March.

Jayne Molyneux

Strategic Lead for Youth



***SPORT
ENGLAND***

Overall Vision of the PE & School Sport Premium

A measurable and sustained improvement in school PE and sport ensuring **all** pupils leaving primary school are physically literate and with the **knowledge, skills and motivation** necessary to equip them for a **healthy lifestyle** and **lifelong participation** in **physical activity** and **sport**

Sport England Strategy: Towards An Active Nation

Our Vision:

We want **everyone** in England, regardless of **age**, **background** or **level of ability** to feel able to **engage** in sport and physical activity. Some will be young, fit and talented – **but most will not.**

We need a sport sector that **welcomes everyone** – meets their **needs**, treats them as **individuals** and **values** them as **customers**



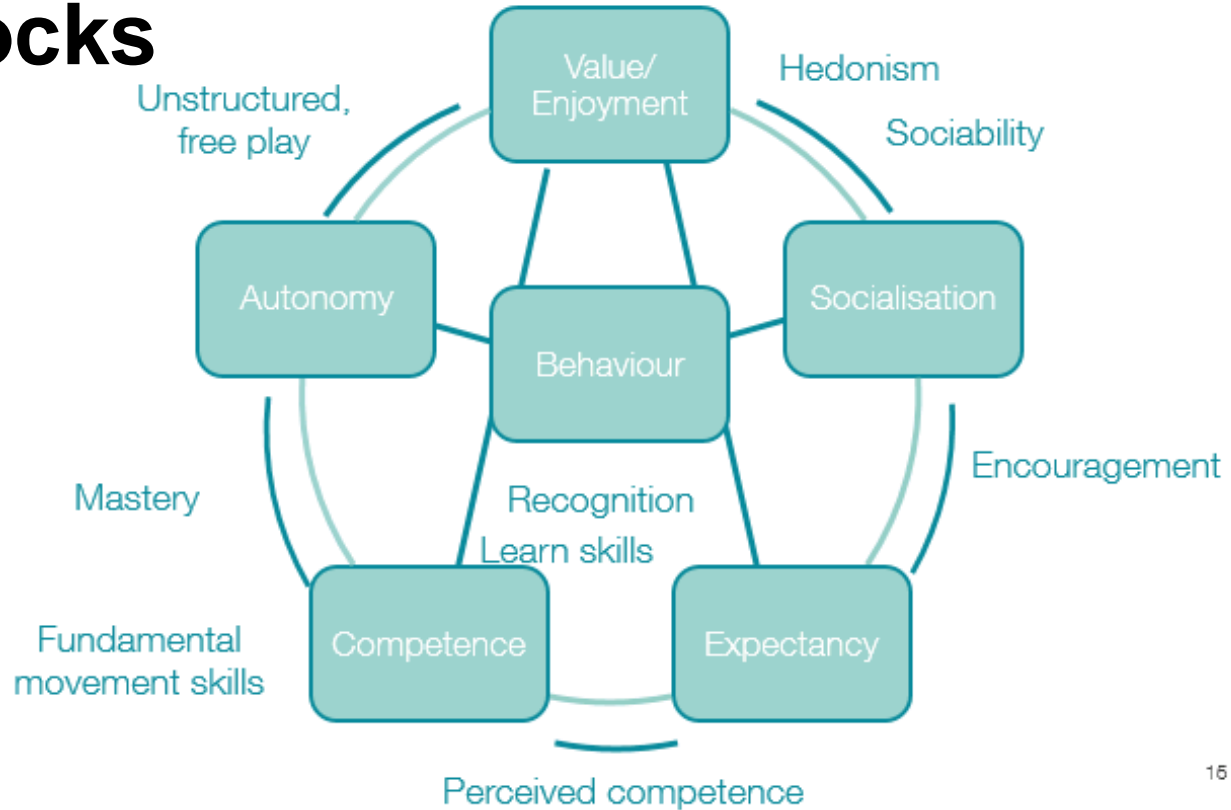
Children and Young People

“Building stronger foundations through personal competence, enjoyment and avoiding bad or negative experiences”

- Competence and enjoyment
- Avoid negative or bad experiences
- Children are customers too
- Extended remit to 5 – community
- Transition points – more joined up provision



Building Blocks



Challenges for us all:

- What is your current PE and School Sport Offer like?
- Does it cater for all children?
- Are you using your resources effectively?

Role of the National Partners

- Sport England
- Youth Sport Trust
- Association for Physical Education
- Sports Coach UK
- County Sports Partnership Network

Any Questions?

Jayne Molyneux Strategic Lead for Youth



***SPORT
ENGLAND***

Workshop A
Practical Inclusion
International Room

Workshop B
Supporting and Assessing Pupil
Progress
The Hayward Suite

Workshop C
National Strategies to Local
Implementation
Fallowfield Suite

Workshop D
Developing a Sustainable Workforce
Major Buckley Suite

Workshop E
Planning and Accountability for the next 3
years
Sir Jack's Suite

Workshop F
Website Support
The Billy Boot Room

Primary PE and School Sport Premium Conference

30th March 2017

[#BCPPSPconference17](#)



Q & A panel



Deborah Williams

Chair of Active Black Country



Sue Cameron
Head teacher of
Glynne Primary School



Ian Courtney

Chair of the National Governors Association





Mike Crichton

Chair of the Association of Physical Education





Will Swaithe

Head of Physical Education and Achievement at the Youth Sport Trust



Vikki Tolley
Children's Health and
Wellbeing Officer
Walsall Council





Q & A panel

Black Country **Primary**
PE and Sport Premium
Awards 2017





Alistair Malcolm



Physical Activity and Health Enhancing Initiatives Award

Bantock Primary School

The Whole School Improvement Award

The Federation of Abbey Infant and Abbey Junior Schools

Increased Participation in Competitive Sport Award

Glynnne Primary School

Black Country **Primary**
PE and Sport Premium
Awards 2017

Chair of Active Black Country Deborah Williams



Active Black Country

Today's inactive children are tomorrow's inactive adults

Children

Black Country
Reception (Age 4 - 5)



11.9% OBESE (9.3% Nationally)

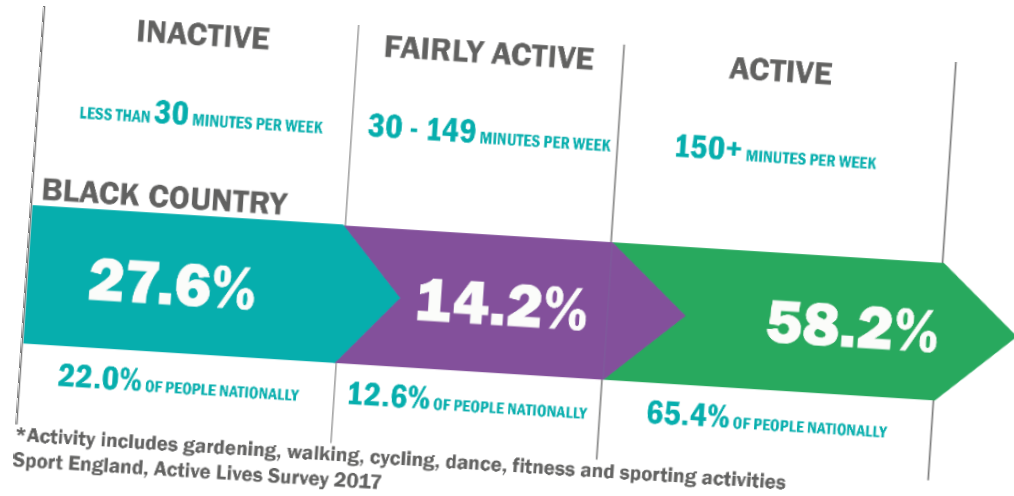
Year 6 (Age 10 - 11)



25.3% OBESE (19.8% Nationally)

Source: National Child Measurement Programme, PHE 2015

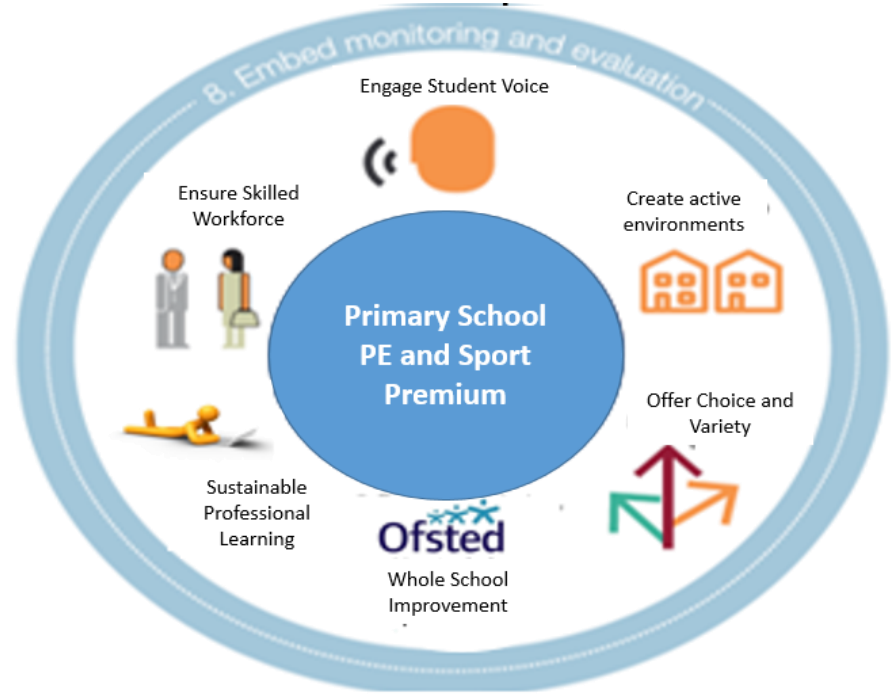
Adults



Sustainable Legacy 2020: The Primary PE and School Sport Premium Picture

Sustainability

Additionality



Active Black Country Support



**All slides from today and further
information can be found at**

www.activeblackcountry.co.uk